



A message from the CEO and Board Chair

Each year our Annual Report is an opportunity to pause, reflect and recognise our challenges and celebrate those we have overcome.

The landscape in which we deliver disability services has changed considerably over recent years. We may face many hurdles, but we have embraced ongoing change and through it all we have stayed true to our culture of flexibility and evolution.

In 2022/23 we continued to plan and make decisions to ensure our status as a leading disability provider in Western Australia. Our strong future is guided by SensesWA Strategic Plan 2023-2026. The development of this strategic plan was a collaboration between our clients, our employees, key strategic partners, Executive, and the Directors of the Board. We are very grateful to everyone who shared their stories, insights, wishes and expertise with us to make this plan, which we are now bringing to life.

Upholding a high standard of governance is essential in delivering on our Strategic Plan. Over the next 3 years we will strengthen our foundations, continuously improve our performance, and ensure that every client in our care is at the centre of every decision we make. We place equal focus on investing in our workforce to ensure employees are supported to achieve professional satisfaction and excellence.

SensesWA experienced many positive achievements this year: Our **new Lionel Miller Centre at Armadale** opened to support clients in the South-East metropolitan area. The facility was constructed as a result of a generous bequest from the late Mrs Irena Miller, wife of Lionel. The state-of-the-art centre features a multi-purpose gym, fully accessible kitchen and toilet facilities, therapy rooms, office spaces, and a beautiful sensory garden funded by Lotterywest.

Being **beneficiaries of a Telethon grant** enabled the purchase of 11 Frame Runners. People with physical disabilities like cerebral palsy and similar conditions have the opportunity to learn how to frame run by borrowing one of our Frame Runners and experience the joy of running. This exciting sport is relatively new to the Western Australian community, and we are delighted to bring it to our regional areas in the South West.

SensesWA continues our commitment to playing a leading role in the provision of **expert specialist services within the Deafblind community**. Our partnership project Deafblind Information Australia (a consortium of three organisations SensesWA, Able Australia and Deafblind Australia) is an information resource for Australians with deafblindness, their families, support networks, professionals and service providers. We are very proud that members of our team travelled to Ottawa Canada to present on 'Raising Expectations - Improving Website Accessibility for People with Deafblindness.' at the 18th Deafblind International World Conference 2023.

We continue to invest in our systems and processes to ensure continuous improvement in safety, service quality and client outcomes. This year we rolled out a number of initiatives improving our approach. We launched our **new SensesWA App** which offers our community based clients and families greater control and flexibility over their support services, while keeping in touch with everything SensesWA from this mobile phone app.

As an employer we always prioritise the safety of our team and our clients. Our teams underwent additional safety training including the use and roll out of our new personal alarm system. This user-friendly initiative makes it easier for our team to quickly trigger safety or medical alerts in emergencies, establishing a more secure work environment and further safeguarding our clients and lone workers.

SensesWA continued our **commitment to Reconciliation** with the completion of our inaugural Reflect Reconciliation Action Plan (RAP). As part of this we commissioned local Aboriginal artist, Kevin Bynder to create a work of art incorporating our brand colours. The artwork features contemporary and customary icons, to represent people connecting with each other across the lands and routes they travel to provide and receive services in the Western Australian community. The artwork is on display at our head office in Burswood.

This year SensesWA took part in Reconciliation WA's Street Banner program by sponsoring two banners one in Kings Park and one in Albany. The Reconciliation Week Street Banner features colourful street banners flying across the State showcasing artwork from an emerging Western Australian Aboriginal artist. Funds from each sponsor go directly to the artist, who this year was Beverley Rogers.

All these efforts and more are part of our long-term commitment to making us a culturally competent and inclusive organisation for Aboriginal and Torres Strait Islander employees, clients, and other partners.

Our new values sit at the core of everything we do, and we work hard to embed them in our daily practice. They play a central role in the recruitment, selection and development of our employees, so that we are a workforce that is highly skilled, cares and values our clients and each other. Our people are our greatest asset. Their diversity, skill, commitment, compassion, and professionalism are what drives our success. We respect, value, and nurture the diversity of our workforce and client group, and see it as a key strength for our disability service.

This year we were thrilled when Support Worker, Cindy was recognised for her outstanding contribution and dedication to our clients. Cindy was the winner of the Excellence in Home and Family Support Award, at the NDS Disability Support Awards 2023. On behalf of all the Board and Executive Leadership Team, we would like to thank all our people for their hard work and commitment.

There are many exciting opportunities ahead for SensesWA, as our passionate people continue to provide a diverse range of services for our clients to achieve their best life and wellbeing. We look to the future and continue to work together to support building a better and more united disability sector for all people with disability and the WA community.



Kerry Fryers
Chief Executive Officer
(Acting)

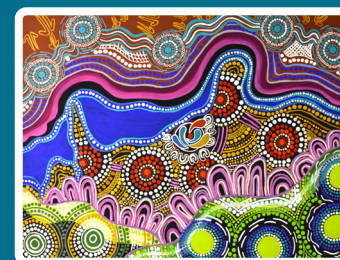


Danny Murphy
Chair, SensesWA Board

Acknowledgment

SensesWA acknowledges the traditional custodians of the land on which our services are delivered, particularly the Whadjuk people of the Noongar nation (as the majority of our people work on Whadjuk Noongar Boodjar).

We pay our respects to the Elders, healers and educators, past, present and emerging of the many traditional lands and language groups of Western Australia with whom we work and acknowledge their continued connection to Country, ceremonies and identity.



Artist: Kevin Bynder

In 2022, SensesWA commissioned local Aboriginal artist, Kevin Bynder to create this vibrant artwork, incorporating our brand colours. It features contemporary and customary icons, to represent people connecting with each other across the lands and routes they travel to provide and receive services in the Western Australian community.

Highlights

Lionel Miller Centre



Our new Lionel Miller Centre at Armadale opened supporting clients in the South-East metro area. The building was constructed as a result of a generous bequest from the late Mrs. Irena Miller, wife of Lionel. The state-of-the-art centre offers many multipurpose indoor and outdoor spaces suitable for individual or group activities. Some of the main features are the therapy gym, fully accessible kitchen, toilet and change room facilities, therapy rooms, office spaces, and a beautiful sensory garden funded by Lotterywest.

In the multipurpose gym, the innovative Luna ceiling track system hoist was chosen to assist with flexibility of transfers and physical rehabilitation. Therapists can use the hoist and tracking system in a safe and controlled environment to perform a variety of exercises such as strength, balance, and functional training.



The stunning sensory garden was designed and constructed in partnership with aboriginal company Kardan Constructions. The garden won the Design and Construct Garden of the Year at the Landscape Industries Association WA 2023 Awards of Excellence. This amazing building and gardens are located at 25 Fourth Rd, Armadale.

Frame Running



As beneficiaries of a Telethon grant SensesWA have a new regional fleet of 11 Frame Runners, which can be hired for a trial period by people living with a physical disability.

Frame Running is an innovative sport and recreational activity for people with a physical disability like cerebral palsy, or similar conditions, who have impaired balance and who are unable to functionally run.

This exciting sport is relatively new to the Western Australian community, and we are delighted to bring it to regional areas in the South West. Participants can learn how to run with the assistance of a frame, by borrowing one of our Frame Runners. Assessments for participants when hiring the Frame Running equipment will be supported by our experienced physiotherapists.



The Frame Runner program will assist in building an active lifestyle for people with disability in regional WA and contribute to them taking part in running activities, creating regular social engagements while promoting friendships, fun and fitness.

Award Winning Team



This year we were thrilled when SensesWA Support Worker Cindy was recognised for her outstanding contribution and dedication to our clients. Cindy was the winner of the Excellence in Home and Family Support Award, at the NDS Disability Support Awards 2023.

Working in the Perth area, Cindy assists clients like Kimberley to live independently. She works closely with and assisted Kimberley to exercise, catch up with friends and enjoy her work at a homeless charity. Kimberley's family has noticed how active and social she has become since Cindy began working with her.

"My daughter Kimberley is a young Deafblind woman with other health issues. She's been reliant on SensesWA Support Workers for many years and has enjoyed improved quality of life because of Cindy's input." *Janet Kimberley's Mum*



SensesWA had 4 team members in total nominated at this year's awards. Congratulations to everyone who was nominated, your work is integral to building an inclusive and equitable society, supporting people with disability to achieve their goals and live their lives the way they want to.

Deafblind Conference



SensesWA was proud to have two team members Meredith Prain (Project Manager, Deafblind Consultant and Senior Speech Pathologist) and Melanie Robartson (Deafblind Consultant and Senior Speech Pathologist) present at the 18th Deafblind International World Conference 2023 in Ottawa Canada.

They present as part of the Deafblind Information Australia (DBIA) project on the topic: Raising Expectations - Improving Website Accessibility for People with Deafblindness.

"Deafblind Information Australia is a consortium of Able Australia, SensesWA and Deafblind Australia. The DBIA project is funded by an Information, Linkages and Capacity Building grant from the National Disability Insurance Agency and provides web-based information to Australians with deafblindness, their families,



support networks and service providers. Despite best intentions, websites are often inaccessible. In this workshop we shared what we learned in undertaking a website accessibility audit and provided attendees with an opportunity to evaluate their own or other websites." *Melanie*

If you would like to learn more visit:
www.deafblindinformation.org.au

Financials

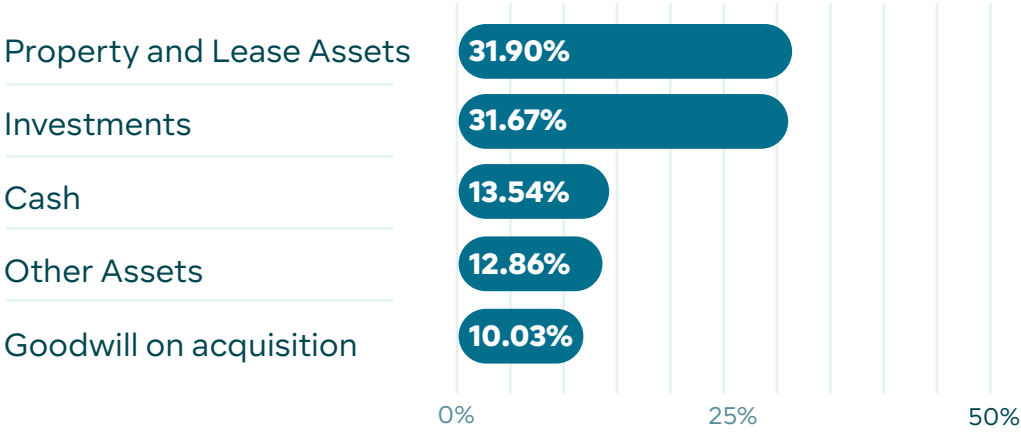
Financial overview for the year ended 30 June 2023.

What we earned

	2020/21	2021/22	2022/23
Total Revenue	\$30.211M	\$27.997M	\$29.049M
Government Funding	\$27.177M	\$25.474M	\$23.774M

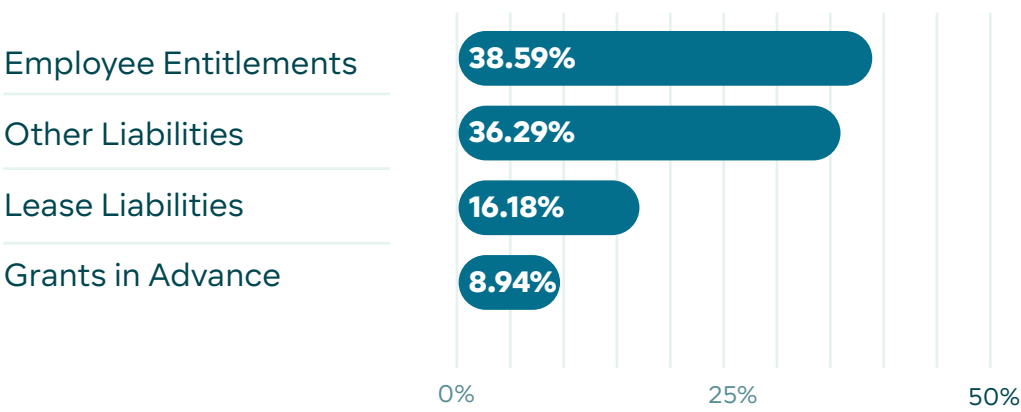
What we own

Total Assets: \$17.251M



What we owe

Total Liabilities: \$8.142M



Living our values

Our values are the promises we make to our clients, their families, our colleagues, our partners, and the broader community. They define who we are, what we stand for, and how we behave.

As we continue our journey as a strong values-based organisation, we will act, lead, and make decisions in alignment with our shared values every single day.

We deliver excellence by being



Inclusive

in how we listen, collaborate, value choice, embrace diversity and aim to overcome disadvantage.



Authentic

in our relationships; honest in our conduct.



Courageous

in speaking up; in being determined in facing challenges.



Curious

in our search for the best; we explore with ingenuity and do not sacrifice our approachability.



SensesWA
Head Office
11 Kitchener Avenue
Burswood WA 6100

Providing Therapy and Support across:

Perth Metropolitan
Wheatbelt
South West
Great Southern

T 1300 111 881
ABN 93 169 195 127



senseswa.com.au

